

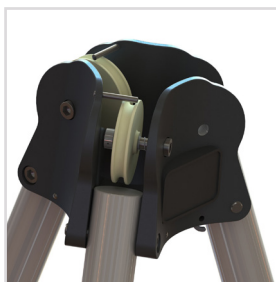
TR3

TRIPOD

TECHNICAL DATA SHEET - ISSUE 8



Ultra lightweight, tough, and with a durable alloy construction, the TR3 tripod is primarily to be used as Personal Protective Equipment, to provide access or fall protection in confined space environments. TR3 also provides anchorage for one winch operator/supervisor standing next to the tripod. It may alternatively (with different equipment) be used for goods carrying, with prior approval from Checkmate. An optional protective storage/carry bag can be supplied.



Crown Detail

As standard, the TR3 comes with 2 x spring loaded pulleys, and 1 x eyebolt. Up to 3 of each can be fitted on request.



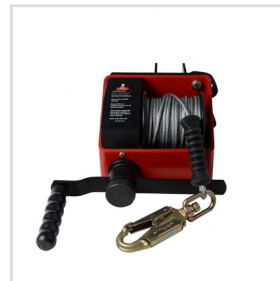
Auto Locking Leg

Legs are locked in the open position automatically during use and easily disengaged for folding.



Captive Pins

Legs are height adjustable using detent pins which are secured to tripod using PVC coated keeper wires.



WG-01 Hand Winch.

The TR3 tripod can be fitted with a 20m worm-gear winch, in conjunction with FABXR, for suspended work.



Robust Pivoting Spiked Feet

Tripod fitted with pivoting feet with hot bonded rubber soles for soft or hard surfaces. Includes slot for anti-splay webbing strap.



FABXR and FABXR-DB

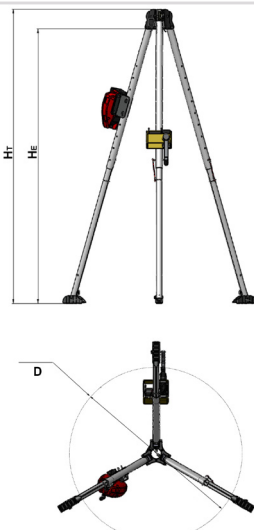
TR3 can be fitted with FABXR/ FABXLR and FABXR-DB/FABXLR-DB for emergency rescue with the user descending via a ladder.

TR3

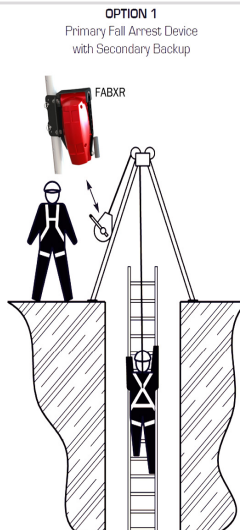
TRIPOD

TECHNICAL DATA SHEET - ISSUE 8

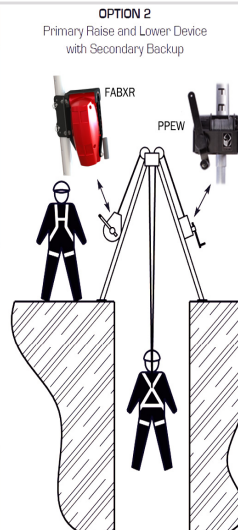
Prod. Code	Description	Weight
TR3 TRIPOD	Height Adjustable Tripod	17kg
TR3-BAG	Storage/Carry Bag For TR3 Tripod	1kg



OPTION 1
Primary Fall Arrest Device
with Secondary Backup



OPTION 2
Primary Raise and Lower Device
with Secondary Backup



Heights & Hole Size
 Position A = Max extension with bracket fitted
 Position B = Min extension with bracket fitted
 Position C = Min extension - no bracket (connect to eyebolt only)
 Several positions available between Position A & B

Position	HT	HE	D
A	2.4	2.1	1.4
B	1.7	1.5	1
C	1.4	1.1	0.7

All measurements in Meters
 HT = Height to top of TR3 crown
 HE = Height to bearing point of eyebolt
 D = Diameter to inside feet

Features

- **Load Capacity**
Fall Arrest: Single user max 150kg (EN), 141kg (ANSI)
(+1 operator) Good carrying: Max 250kg
- **Height Adjustable**
See table
- **Foot Print Diameter**
See table
- **Folded Length**
1.5m (Excluding bag)

Standards

- EN795:2012 Class B
- ANSI Z359.18-2017



Dyneema® and Dyneema® the world's strongest fiber™ are trademarks of DSM. Use of these trademarks is prohibited unless strictly authorized.