

# ATOM-XTREME

1.8m RTFA

TECHNICAL DATA SHEET - ISSUE 10



**ATOM  
XTREME**  
SAFETY BY DESIGN

Checkmate ATOM-XTREME lightweight retractable type fall arrest. ATOM-XTREME is the smallest and lightest retractable type fall arrest in its class in the world. Its lightweight chassis, PC ABS housing and webbing made with Dyneema® contribute to its outstanding strength and performance. The ATOM XTREME range is a totally new concept in design engineering and has a revolutionary triple micro pawls lockout system and a full internal braking mechanism. All models can be linked together with a dual kit.



#### Triple Micro Pawls

The three pawls operate independently for faster lock on. The Internal slipping brake controls the fall energy without the need for an external pouch.



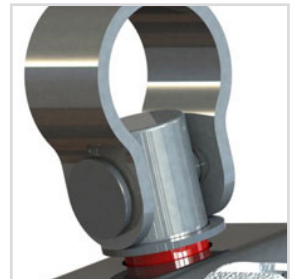
#### Load Bearing Steel Chassis

The internal hot rolled steel chassis provides a structural metallic core beneath the external protective housing.



#### PC/ABS Housing

The high strength palm-size housing is robust and durable giving protection to the mechanical assembly and internal parts.



#### Fall Arrest Indicating Swivel

The swivel incorporates a fall indicator, which clearly shows if the device has been subjected to a shock load.



#### 150kg Max. User Capacity

With a 150kg maximum user rating, the ATOM XTREME caters for a broad range of users.



#### Dual Yoke Assembly

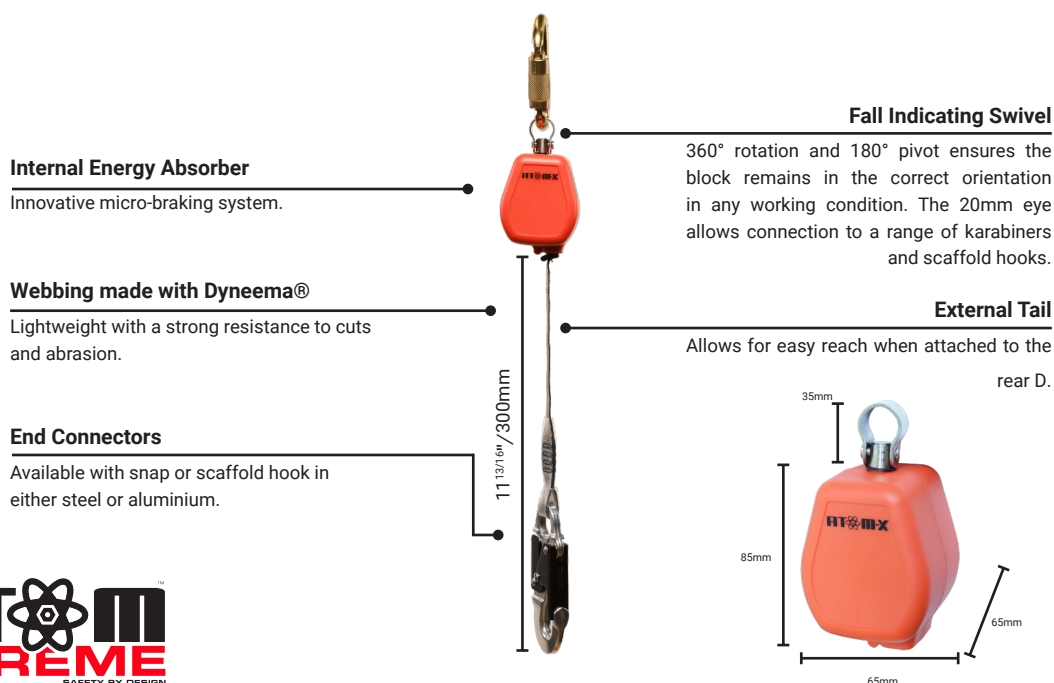
The ATOM-XTREME Dual allows continuous connection when transferring between anchorages. Both devices work independently, and also freely rotate and swivel for correct alignment.

# ATOM-XTREME

## 1.8m RTFA

TECHNICAL DATA SHEET - ISSUE 1.0

Prod. Code	Description	Weight
ATOM-X-101	1.8m ATOM-XTREME with alloy snap hook	0.9kg
ATOM-X-102	1.8m ATOM-XTREME with alloy scaffold hook	1.5kg
ATOM-X-105	Dual 1.8m ATOM-X-101 (snap hook) with yoke	1.8kg
ATOM-X-106	Dual 1.8m ATOM-X-102 (scaffold hook) with yoke	2.4kg
ATOM-DB	Joining kit for dual assembly	0.3kg



## Features

- **Capacity**  
1.8m
- **Internal Energy Absorber**  
Innovative micro-braking system
- **External Tail**  
The external webbing tail allows for easy reach when attached to the rear D
- **Webbing made with Dyneema®**  
Lightweight with a strong resistance to cuts and abrasion
- **User weight**  
150kg inc. tools and equipment

## Standards

- EN 360:2002
- ANSI Z359.14:2014 CLASS A
- ANSI A10.32:2012
- OSHA 1910 & 1926 Subpart M

